

U  
P  
M



POLITÉCNICA

UNIVERSIDAD  
POLITÉCNICA  
DE MADRID



UNIVERSIDAD  
POLITÉCNICA  
DE MADRID

Acting, in my capacity as Rector of the Universidad Politécnica de Madrid (UPM), on behalf of the university's educational community, it is my pleasure to introduce you to what is Spain's leading higher education institution in the fields of engineering, architecture, sports science and fashion design.



**Guillermo Cisneros Pérez**  
Rector

UPM is the country's largest technical university, and an influential European higher education institution. I am proud to say that the UPM stands out for its intensive research activity, its internationally accredited and recognized academic excellence, and its interweaving into the fabric of national and international industry, which are its mainstays as a public higher education institution.

participate in the generation of new knowledge. Thanks to the effort of UPM's academic and research staff, administrative staff and alumni around the globe, UPM is acknowledged to be one of the best 75 global universities for engineering and architecture and ranks within the world's top 94 in terms of employability.

Around 36,000 students are training on our 4+1 university campuses distributed across the city of Madrid. UPM also has research centres and institutes where research groups are working on many projects that also serve to train our students at the cutting edge of their fields and where they

UPM is a public university committed to and working towards the 17 Sustainable Development Goals set up by the United Nations General Assembly. UPM is open to anyone wanting to learn, research and share their talent in the branches of knowledge in we specialize. I invite you to learn more about us in this presentation.



POLITÉCNICA

UNIVERSIDAD  
POLITÉCNICA  
DE MADRID

#SOMOSUPM

# UPM Facts and Figures

- 15 schools, 1 faculty and 1 affiliated college
- Almost 2,900 teaching staff and researchers
- Over 28,000 undergraduate students (2023/24)
- 5,700 master students (2023/24)
- Over 1,800 PhD students (2023/24)
- Budget of 400 million euros

- 56 accredited bachelor degree programmes
- 100 accredited master degree programmes
- 14 accredited combined bachelor and master degree programmes
- 44 accredited PhD programmes
- 222 UPM academic programmes (executive master, expert specialization and lifelong training programmes)

- 79 double degree programme agreements with international universities
- 1,600 agreements with international universities
- International exchanges by around 1,700 UPM students every year
- 18 cooperation for development groups
- Over 6,900 work placements in the 2022/23 academic year

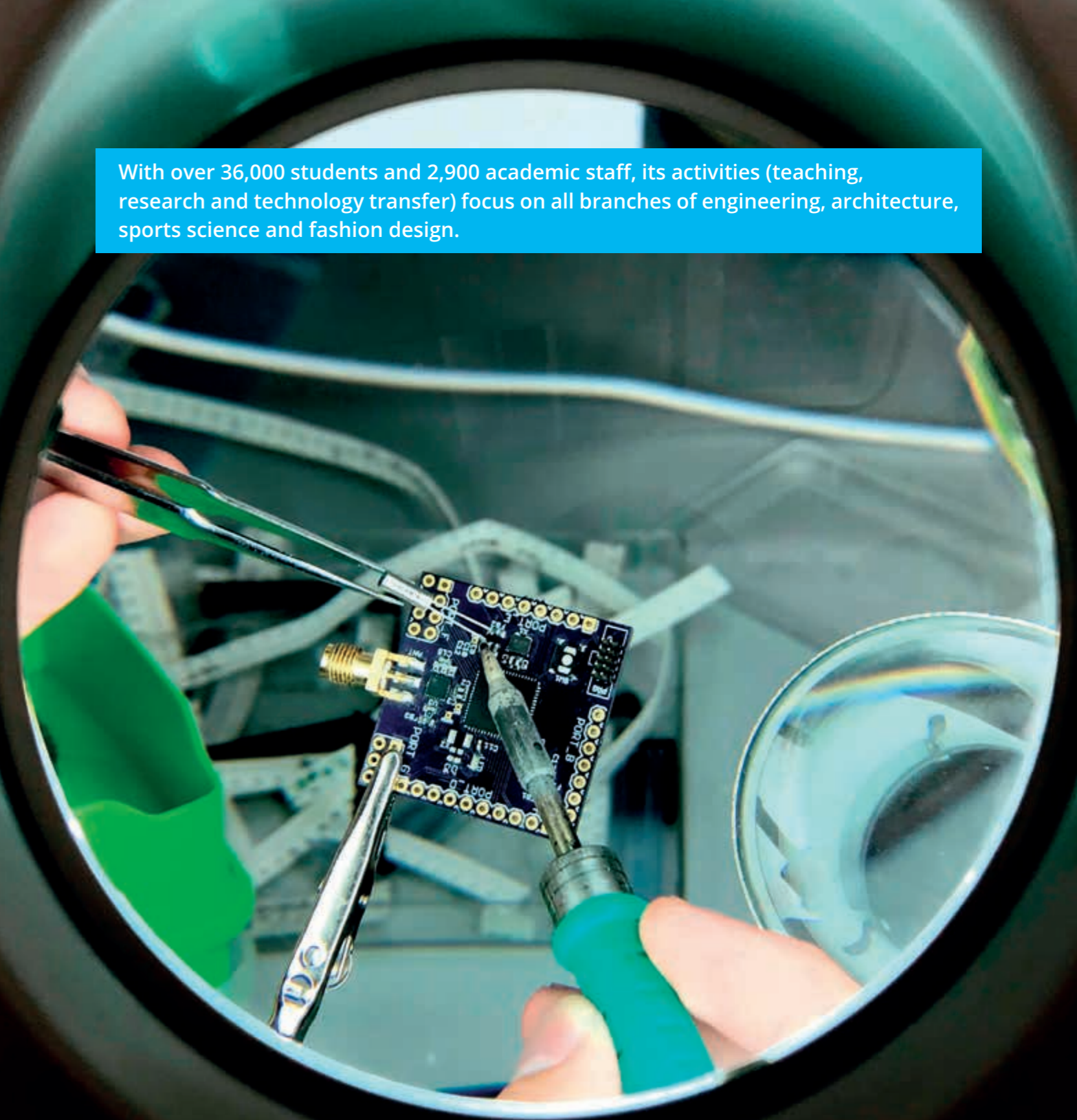
- 16 sports clubs
- A total of 130 student associations

- 220 research groups
- Funding of more than 86 million euros from regional, national and international projects in cooperation with industry and foundations (2022)
- Funding totalling 218.24 million euros from projects with industry from 2009 to 2022
- 74 university-industry partnerships
- Over 320 new businesses and 150 start-ups created through the ActuaUPM programme, of which 60% have a five-year survival rate, generating more than 180 million euros in funding and 1000 quality jobs
- 181 Horizon Europe projects granted and 549 Horizon 2020 projects, 112 of which are coordinated by the UPM, making UPM the leading Spanish University in H2020 return
- The UPM is a core partner of EIT Digital, IT Health, EIT Raw Materials, EIT Climate-KIC and EIT Urban Mobility

- 48 internationally accredited degree programmes

With over 36,000 students and 2,900 academic staff, its activities (teaching, research and technology transfer) focus on all branches of engineering, architecture, sports science and fashion design.

The UPM is one of Europe's top universities, renowned for its academic and research quality, innovation and close ties with society. The UPM offers 56 accredited single or joint bachelor degree programmes and its degree programmes are highly rated by industry.



# UPM in the rankings

The UPM has moved up the rankings of the best world universities in Engineering and Technology to number 73

For the seventh year running, the UPM ranks among the top 100 world universities in these subject areas\*

UPM has 2 degree programmes within the top 50 and 5 within the top 75 in the world\*

- Architecture/ Built Environment
- Engineering Civil & Structural
- Engineering – Mineral & Mining
- Engineering Electrical & Electronic
- Engineering Mechanical, Aeronautical & Manufacturing

\*QS World University Ranking (2024)

UPM has 1 degree programme within the top 8 in the world\*

- Civil Engineering

\*ARWU-Shanghai Ranking (2023)

UPM is the leading Spanish technical university for employability\*, ranking 94 in the world

\*QS Employability Ranking (2022)

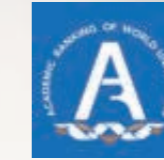
According to the 2024 QS World University Ranking by subject of interest, the Universidad Politécnica de Madrid is one of the 75 best universities in the world in the field of engineering and technology. UPM is also one of the best world universities for employability, ranking as the top Spanish technical university.



QS WORLD UNIVERSITY RANKING (2024)

Analysing 1,550 institutions, where the UPM is ranked 73 in the world in the field of engineering and technology. By disciplines, the UPM's world ranking is as follows:

- Architecture/ Built Environment: 20
- Engineering Civil & Structural: 49
- Engineering – Mineral & Mining: 51-70
- Engineering Electrical & Electronic: 73
- Engineering Mechanical, Aeronautical & Manufacturing: 75
- Computer Science & Information Systems: 115
- Agriculture & Forestry: 101-150
- Art & Design: 101-150
- Environmental Science: 151-200
- Materials Science: 151-200
- Mathematics: 151-200
- Engineering Chemical: 151-200
- Biological Sciences: 351-400
- Chemistry: 401-450



ARWU-SHANGHAI RANKING (2023)

Analysing over 1,200 universities, where the UPM's world ranking by disciplines as follows:

- Civil Engineering: 8
- Agricultural Sciences: 76-100
- Metallurgical Engineering: 101-150
- Instruments Science & Technology: 151-200
- Biological Sciences: 201-300
- Mechanical Engineering: 301-400
- Energy Science & Engineering: 301-400
- Chemical Engineering: 301-400
- Computer Science & Engineering: 401-500
- Mathematics: 401-500



TAIWAN RANKING (2023)

Analysing over 800 universities, where the UPM's world ranking by disciplines is as follows:

- Civil Engineering: 150
- Agricultural Sciences: 180
- Plant & Animal Science: 235
- Mechanical Engineering: 241
- Biology & Biochemistry: 256
- Computer Science: 275
- Electrical Engineering: 301-350
- Social Science: 401-500
- Materials Science: 401-450
- Physics: 451-500



QS GRADUATE EMPLOYABILITY RANKING (2022)

The UPM is ranked 94th in the world for employability.



U-RANKING 2023

Top-ranked university for job placement

INTERNATIONALLY RENOWNED UNIVERSITY

# International Accreditations

The UPM is the Spanish university with the most internationally accredited engineering and architecture degree programmes.

UPM degree programmes hold around 65 international accreditations by ABET, NAAB, CABA, EUR-ACE or EURO-INF. Awarded by independent European and US agencies, these quality labels improve the prospects of its graduates on the international labour market by certifying that the UPM's training process meets the standards of the best universities in the world.

**SPAIN'S LEADING UNIVERSITY IN TERMS OF INTERNATIONAL ENGINEERING AND ARCHITECTURE ACCREDITATIONS**

# 48 Internationally Accredited Degree Programmes

## ABET

What is ABET?

The highly reputed Accreditation Board for Engineering and Technology (ABET) is a US non-profit non-governmental organization that accredits higher education or post-secondary education programmes in applied science, computer science and engineering and technology disciplines.

## EUR-ACE®

What is EUR-ACE®?

The EUR-ACE® label is a certificate awarded by an agency authorized by the European accreditation network ENAEE to a higher education institution with respect to a bachelor or master programme evaluated according to a number of standards defined according to the principles of quality, relevance, transparency, recognition and mobility governing the European Higher Education Area.

## NAAB

What is NAAB?

The National Architectural Accrediting Board (NAAB) is the only agency authorized in the United States to accredit professional architecture degree programmes.

## EURO-INF

What is EURO-INF?

The highly reputed Accreditation Board for Engineering and Technology (ABET) is a US non-profit non-governmental organization that accredits higher education or post-secondary education programmes in applied science, computer science and engineering and technology disciplines.

## CABA

What is CABA?

The *Chartered Association of Building Engineers* is a professional body that accredits the degree programmes bearing this quality seal by mapping competencies to membership grades. CABA members are certified to have achieved a specified level of professional competence, which makes it easier for them to find employment in the international sphere.

## Number of accredited degrees programmes



# Scientific and technological expertise

+  
**220**

## RESEARCH GROUPS

220 research groups, staffed by over 2,745 researchers, of which 350 are full professors

+  
**86 M/€**

## PROJECTS

Funding of around 86 million euros from regional, national and international projects in cooperation with industry and foundations (2022)

+  
**730**

## AWARDED PROJECTS

181 projects awarded under FP7 and 549 under H2020, of which 112 were coordinated by UPM, where UPM ranks as the top Spanish university in terms of H2020 return

Photo by: SANTIAGO VILLAMEDIANA

# UPM at the forefront of innovation in Spain



POLITÉCNICA

UNIVERSIDAD POLITÉCNICA DE MADRID

## PARTICIPATION IN THE EUROPEAN INSTITUTE OF INNOVATION AND TECHNOLOGY

The UPM is a core partner of EIT Digital, EIT Health, EIT Raw Materials and EIT Climate-KIC, and network partner of EIT Urban Mobility, and UPM's EIT participation since 2014 is worth over 16 million euros

## QUALIFIED RESEARCHERS

Every year, on average 3 researchers are hired under Ramón y Cajal contracts, five-year contracts designed to attract internationally experienced researchers with additional funding for research activities, and 6 researchers are employed under Juan de la Cierva contracts, two-year contracts for postdoctoral researchers

Technology transfer activities are the source of 15% of the UPM's budget.



## BOOSTING R&D&I

One strategic policy line at the Universidad Politécnica de Madrid is to boost R&D&I and knowledge transfer to society. As a result of these two commitments, the UPM

ranks among the most active Spanish universities with respect to research activity and is first in terms of competitively secured funds.

The UPM is also the leading Spanish university in terms of patent awards with a portfolio of over 605 active patents.



UNIVERSIDAD  
POLITÉCNICA  
DE MADRID

POLITÉCNICA

## Close ties with industry

R&D&I cooperation with industry is one of the UPM's strengths. It is the Spanish university that collaborates most with industry in terms of both the number of projects and funding awards and agreements. It is home to one of the most active entrepreneurship environments with over 300 start-ups as part of its entrepreneurship programme.



Foto por: CELIA VICENTE ARÉVALO



Photo by: SOL DE BERNARDO

### RESEARCH STRUCTURES

- **16 research centres** (including the Plant Biotechnology and Genomics Research Centre (CBGP) which is a Severo Ochoa Centre of Excellence), 5 research institutes and 3 innovation centres.
- **73 laboratories**, registered in the laboratory network.
- A *singular* scientific and technical infrastructure (ICTS): Institute of Optoelectronic Systems and Microtechnology (ISOM).

### INNOVATION

- **74 university-industry partnerships**.
- **605 patents** in force and 570 patents granted.
- **ActuaUPM**: Through its entrepreneurship programs, the UPM has created more than **320 enterprises** and businesses and has incubated and accelerated more than **150 start-ups**. Sixty per cent of the enterprises created at the UPM have a survival rate of over five years. They have generated more than 180 million euros in funding and over 1000 quality jobs.

### PROJECT FUNDING

- From 2009-2022, UPM projects received national funding worth **268.67** million euros.
- From 2009-2022, industry provided funding worth **218.24** million euros

### DOCTORAL PROGRAMMES

- **44 PhD programmes**
- Over **1,800 PhD students** enrolled in 2023/24
- More than **250 PhD thesis defences** per year (45% with international mentions)

# R&D&I Centres and Institutes



UNIVERSIDAD  
POLITÉCNICA  
DE MADRID

POLITÉCNICA

## Institutes

- Solar Energy Institute (IES)
- Institute of Nuclear Fusion “Guillermo Velarde” (IFN-GV)
- Institute of Automobile Research (INSIA)
- Ignacio da Riva Microgravity Institute (IDR)
- Institute of Optoelectronic Systems and Microtechnology (ISOM)

## R&D&I Centres

- Transport Research Centre (TRANSyt)
- Laser Centre
- R&D&I Centre for Energy Efficiency, Virtual Reality, Optical Engineering and Biometry (CEDINT)
- Plant Biotechnology and Genomics Centre (CBGP)
- Centre for Industrial Electronics (CEI)
- UPM-AGROMUTUA-ENESA Joint Research Centre for the Management of Agricultural and Environmental Risks (CEIGRAM)
- Centre for Biomedical Technology (CTB)
- UPM-CSIC Joint Research Centre for Automation and Robotics (CAR)
- Centre for Advanced Materials and Devices for Information and Communications Technologies (CEMDATIC)
- Research Centre on Software Technologies and Multimedia Systems for Sustainability (CITSEM)
- Research Centre on Structural Materials (CIME)
- Centre for Computational Simulation (CCS)
- Information Processing and Telecommunications Centre (IPTC)
- Artificial Intelligence R&D&I Centre (AI.INNOVATION SPACE)
- Biodiversity Conservation and Sustainable Development R&D&I Centre (CBDS)
- Safety and Quality Technology Centre for the Energy and Mining Industries (TECMINERGY)

## Other Technology Development, Innovation and Transfer Support Centres

- Technology Innovation Support Centre (CAIT)
- Technology Innovation Centre for Development (itdUPM)
- Centre for International Cultural Heritage Studies (CIESPC)

# HIGHER EDUCATION AREAS IN THE MADRID REGION



Photo by: ADRIÁN RODRÍGUEZ ESPINA



Ciudad Universitaria (Moncloa) Campus

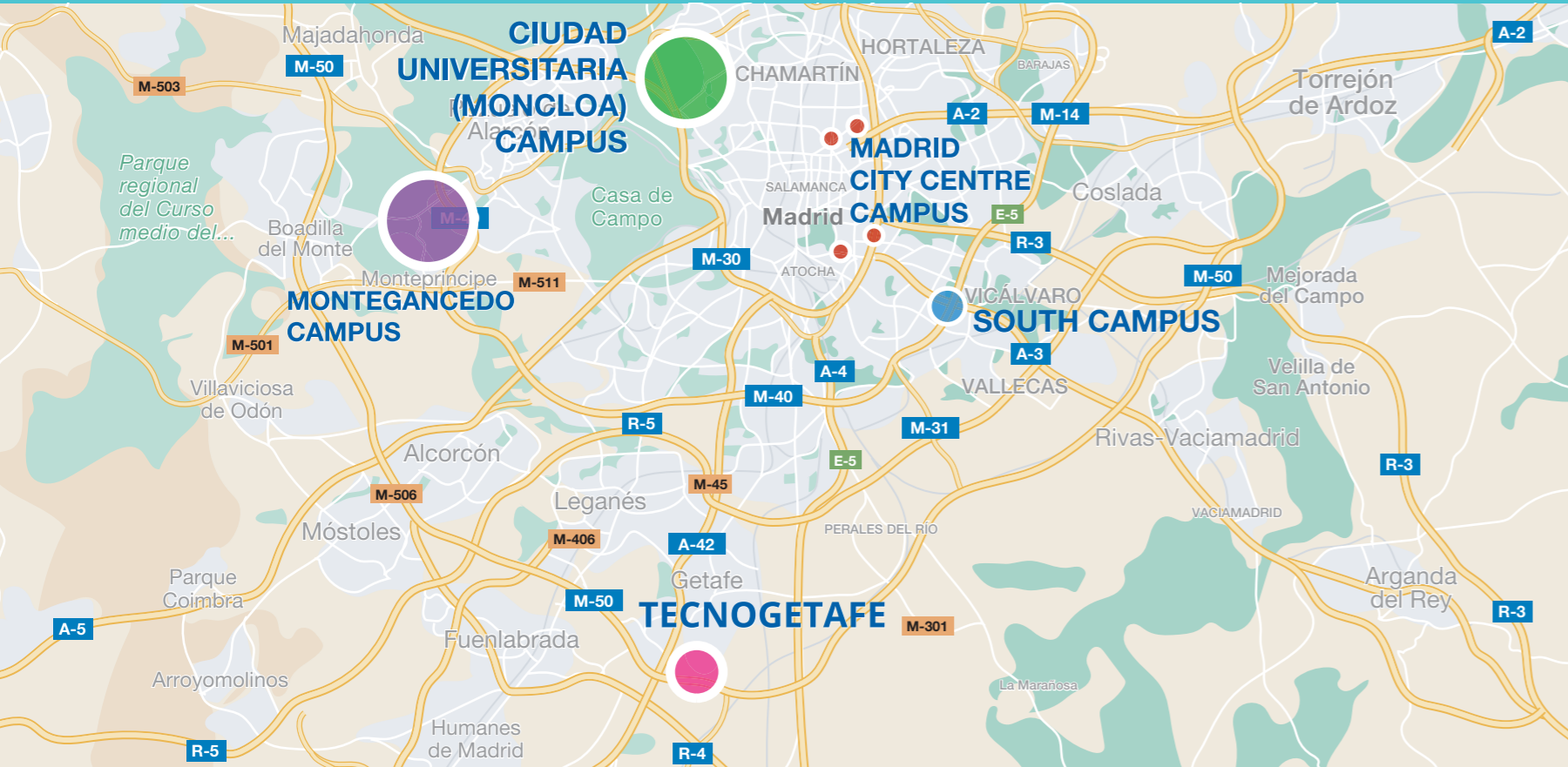


Madrid City Centre Campus

Foto por: LUIS GARCIA

## UPM CAMPUSES

The Universidad Politécnica de Madrid has four university campuses distributed throughout the Madrid region. With fantastic public transport links, UPM campuses are urban spaces designed for teaching and research and offering cultural and sports services to build an exceptional scientific and intellectual environment.

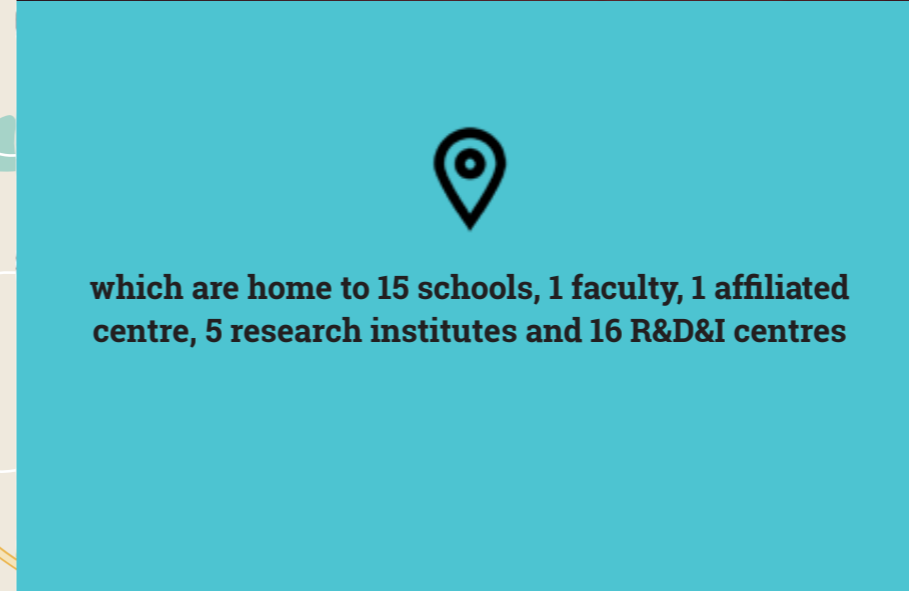


South Campus

Foto por: @biblioupm



Montegancedo Campus



which are home to 15 schools, 1 faculty, 1 affiliated centre, 5 research institutes and 16 R&D&I centres



Tecnogetafe



# CIUDAD UNIVERSITARIA (MONCLOA) CAMPUS

UPM SCHOOLS AND RESEARCH CENTRES



- Escuela Técnica Superior de Arquitectura
- Escuela Técnica Superior de Edificación
- Escuela Técnica Superior de Ingeniería Aeronáutica y del Espacio
- Escuela Técnica Superior de Ingeniería Agronómica, Alimentaria y de Biosistemas
- Escuela Técnica Superior de Ingeniería de Montes, Forestal y del Medio Natural
- Escuela Técnica Superior de Ingenieros de Caminos, Canales y Puertos
- Escuela Técnica Superior de Ingenieros de Telecomunicación
- Escuela Técnica Superior de Ingenieros Navales
- Facultad de Ciencias de la Actividad Física y del Deporte (INEF)
- Instituto de Sistemas Optoelectrónicos y Microtecnología (ISOM)
- Instituto de Energía Solar (IES)
- Instituto de Ciencias de la Educación (ICE)
- Rectorado
- Centro de Investigación del Transporte (TRANSYT)
- Centro de Materiales y Dispositivos Avanzados para Tecnologías de la Información y Comunicaciones (CEMDATIC)
- Centro de Estudios e Investigación para la Gestión de Riegos Agrarios y Medioambientales (CEIGRAM). Centro Mixto UPM-ENESA-AGROSEGURO
- Centro de Innovación en Tecnología para el Desarrollo Humano (itdUPM)
- Centro de Investigación en Materiales Estructurales (CIME)
- Centro de Procesado de la información y las Telecomunicaciones (IPTC)
- Centro Internacional de Estudios sobre el Patrimonio Cultural (CIESPC)
- Centro de I+D+i para la Conservación de la Biodiversidad y el Desarrollo Sostenible (CBDS)



# MADRID CITY CENTRE CAMPUS

UPM SCHOOLS AND RESEARCH CENTRES



- Escuela Técnica Superior de Ingeniería y Diseño Industrial
- Escuela Técnica Superior de Ingenieros de Minas y Energía
- Escuela Técnica Superior de Ingenieros Industriales
- Escuela Técnica Superior de Ingenieros de Caminos, Canales y Puertos (Edificio Retiro)

# ETS DE INGENIEROS DE CAMINOS, CANALES Y PUERTOS (Edificio Retiro)



- Instituto de Fusión Nuclear "Guillermo Velarde" (IFN-GV)
- Centro de Electrónica Industrial (CEI)
- Centro de Automática y Robótica (CAR). Centro Mixto UPM-CSIC



# MONTEGANCEDO CAMPUS

UPM SCHOOLS AND RESEARCH CENTRES



- Escuela Técnica Superior de Ingenieros Informáticos
- Centro de Investigación en Biotecnología y Genómica de Plantas (CBGP)
- Centro de Tecnología Biomédica (CTB)
- Instituto de Microgravedad "Ignacio Da Riva"
- Centro de Domótica Integral (CeDINT-UPM)
- Centro de Apoyo a la Innovación Tecnológica (CAIT)
- Centro de Supercomputación y Visualización de Madrid (CeSVIMA)
- IMDEA Software Institute
- Centro de Operaciones y Soporte a Usuarios de la Estación Espacial Internacional (E-USOC)
- Centro de I+D+i en Inteligencia Artificial (AI.NNOVATION SPACE)
- Centro de Simulación Computacional (CCS)



# SOUTH CAMPUS

UPM SCHOOLS AND RESEARCH CENTRES



- Escuela Técnica Superior de Ingeniería de Sistemas Informáticos
- Escuela Técnica Superior de Ingeniería y Sistemas de Telecomunicación
- Escuela Técnica Superior de Ingenieros en Topografía, Geodesia y Cartografía
- Instituto de Investigación del Automóvil (INSIA)
- Centro Superior de Diseño de Moda de Madrid (centro adscrito a la UPM)
- Centro Láser
- Centro de Investigación en Tecnologías software y sistemas multimedia para las sostenibilidad (CITSEM)

- 1- ETS DE INGENIERÍA Y SISTEMAS DE TELECOMUNICACIÓN
- 2- ETS DE INGENIERÍA DE SISTEMAS INFORMÁTICOS
- 3- CS DE DISEÑO DE MODA

**TECNOGETAFE**  
**TECMINERGY**  
 Centro Tecnológico de Seguridad y Calidad en Industrias Energéticas y Minas

# UPM: Bachelor's, Master's and PhD Programmes

**The UPM offers 56 bachelor's degrees and joint degrees, 100 master's degrees and joint master's degrees, and 44 doctoral programmes.**

UPM graduates are highly regarded by industry. Language training, co-curricular skills and professional accreditation are some of the distinctive features of its academic offering.

UPM degrees cover all areas of engineering, architecture, sports sciences and fashion design, all of which are key aspects of today's society, where technological advances have a decisive influence and engineers and scientists are gaining more and more responsibility.

Recognized for the quality of its teaching, the Universidad Politécnica de Madrid provides its students with thorough scientific and technical training. Its academic offering embodies the excellence and experience of its schools.

**56**  
BACHELOR'S  
DEGREE  
PROGRAMMES

**100**  
MASTER'S  
DEGREES  
PROGRAMMES

**44**  
DOCTORAL  
PROGRAMMES



## LEADER IN EMPLOYABILITY

The UPM stands out as one of the best universities in the world for employability, offering its students great prospects for a successful career. It is **one of the world's top 100 universities for employability** (ranked 94th worldwide) according to the 2022 QS Graduate Employability Rankings, and leads the ranking of the top 10 Spanish universities with **the highest graduate employment rate**, according to Forbes magazine (2023).

Again, the Universidad Politécnica de Madrid is listed as the **university with the best graduate employment rate** by U-Ranking 2023, with a graduate Social Security affiliation rate of 76%.

According to the UPM Graduate Labour Report (2020-21 graduates) published in 2023, 76.34% of UPM graduates find employment after 1.74 months of searching, whereas 93.56% of UPM graduates master's degree holders get a job within 2.21 months of graduation.



Foto por: LUÍS CIFUENTES BARO



Centro de Liderazgo  
y Tecnología UPM

The UPM also has a Leadership and Technology Centre (CLYT). The CLYT represents UPM's commitment to all-round student training. It builds upon the education students receive as part of their curriculum, providing professional training based on

the latest knowledge and terminologies used in the world of work. Ever since its creation, the UPM's CLYT has focused on personal capacity building for current and future leaders, offering training in leadership in a technological environment.



## AGRICULTURAL, FOREST AND ENVIRONMENTAL TECHNOLOGIES

- **BEng in Food Engineering**  
SCHOOL OF AGRICULTURAL, FOOD AND BIOSYSTEMS ENGINEERING
- **BSc in Agricultural Engineering (+ MSc in Agricultural Engineering Fast-Track Option)**  
SCHOOL OF AGRICULTURAL, FOOD AND BIOSYSTEMS ENGINEERING
- **BSc in Agricultural Science and Bioeconomics**  
SCHOOL OF AGRICULTURAL, FOOD AND BIOSYSTEMS ENGINEERING
- **BSc in Agroenvironmental Engineering**  
SCHOOL OF AGRICULTURAL, FOOD AND BIOSYSTEMS ENGINEERING
- **BSc in Biotechnology**  
SCHOOL OF AGRICULTURAL, FOOD AND BIOSYSTEMS ENGINEERING
- **BSc in Environmental Technologies Engineering**  
SCHOOL OF FOREST ENGINEERING AND NATURAL RESOURCES
- **BSc in Forest Engineering (+ MSc in Forest Engineering Fast-Track Option)**  
SCHOOL OF FOREST ENGINEERING AND NATURAL RESOURCES
- **BSc in Natural Areas and Environmental Engineering**  
SCHOOL OF FOREST ENGINEERING AND NATURAL RESOURCES

## INDUSTRIAL TECHNOLOGIES

- **BEng in Mining Technology**  
SCHOOL OF MINING AND ENERGY ENGINEERING
- **BSc in Aerospace Engineering**  
SCHOOL OF AEROSPACE ENGINEERING
- **BSc in Air Transport Management and Operations**  
SCHOOL OF AEROSPACE ENGINEERING
- **BSc in Chemical Engineering**  
SCHOOL OF INDUSTRIAL ENGINEERING  
SCHOOL OF INDUSTRIAL DESIGN AND ENGINEERING
- **BSc in Electrical Engineering**  
SCHOOL OF INDUSTRIAL DESIGN AND ENGINEERING
- **BSc in Energy Engineering**  
SCHOOL OF MINING AND ENERGY ENGINEERING  
SCHOOL OF INDUSTRIAL ENGINEERING

- **BSc in Energy Resources, Fuels and Explosives Engineering (+ MSc in Mining Engineering Fast-Track Option)**  
SCHOOL OF MINING AND ENERGY ENGINEERING
- **BSc in Aerospace Technology Engineering (+ MSc in Aerospace Technology Engineering Fast-Track Option)**  
SCHOOL OF AEROSPACE ENGINEERING
- **BSc in Geological Engineering**  
SCHOOL OF MINING AND ENERGY ENGINEERING
- **BSc in Industrial Design and Product Development**  
SCHOOL OF INDUSTRIAL DESIGN AND ENGINEERING
- **BSc in Industrial Electronics and Automation Engineering**  
SCHOOL OF INDUSTRIAL ENGINEERING AND DESIGN
- **BSc in Industrial Technologies (+ MSc in Industrial Engineering Fast-Track Option)**  
SCHOOL OF INDUSTRIAL ENGINEERING
- **BSc in Marine Engineering**  
SCHOOL OF NAVAL ARCHITECTURE AND MARINE ENGINEERING
- **BSc in Materials Engineering (+ MSc in Materials Engineering Fast-Track Option)**  
SCHOOL OF CIVIL ENGINEERING (MONCLOA CAMPUS)
- **BSc in Mechanical Engineering**  
SCHOOL OF INDUSTRIAL DESIGN AND ENGINEERING
- **BSc in Naval Architecture (+ MSc in Naval and Oceanic Engineering Fast-Track Option)**  
SCHOOL OF NAVAL ARCHITECTURE AND MARINE ENGINEERING
- **BSc in Organizational Engineering**  
SCHOOL OF INDUSTRIAL ENGINEERING
- **BSc in Raw Materials (Mineral Resources and Metallurgical) Engineering (\*)**  
SCHOOL OF MINING AND ENERGY ENGINEERING
- **Joint BSc in Industrial Design and Product Development and Mechanical Engineering**  
SCHOOL OF INDUSTRIAL ENGINEERING AND DESIGN
- **Joint BSc in Electrical Engineering and Industrial Electronics and Automation Engineering**  
SCHOOL OF INDUSTRIAL ENGINEERING AND DESIGN

## MATHEMATICS

- **BSc in Mathematics**  
TECHNICAL HIGHER EDUCATION SCHOOL

## INFORMATION AND COMMUNICATIONS TECHNOLOGIES

- **BEng in Informatics Engineering (+ MSc in Informatics Engineering Fast-Track Option)**  
SCHOOL OF COMPUTER ENGINEERING
- **BEng in Software Engineering (+ MSc in Software Engineering)**  
SCHOOL OF COMPUTER SYSTEMS ENGINEERING
- **BEng in Telecommunication Technologies and Services Engineering (+ MSc in Telecommunication Engineering Fast-Track Option)**  
SCHOOL OF TELECOMMUNICATIONS ENGINEERING
- **BSc in Biomedical Engineering (+ MSc in Biomedical Engineering Fast-Track Option)**  
SCHOOL OF TELECOMMUNICATIONS ENGINEERING
- **BSc in Computer-Based Systems Engineering (+ MSc in Distributed and Embedded Computer Systems Engineering Fast-Track Option)**  
SCHOOL OF COMPUTER SYSTEMS ENGINEERING
- **BSc in Data Engineering and Systems**  
SCHOOL OF TELECOMMUNICATIONS ENGINEERING  
SCHOOL OF TELECOMMUNICATIONS SYSTEMS ENGINEERING
- **BSc in Data Science and Artificial Intelligence**  
SCHOOL OF COMPUTER ENGINEERING  
SCHOOL OF COMPUTER SYSTEMS ENGINEERING
- **BSc in Electronic Communications Engineering**  
SCHOOL OF TELECOMMUNICATIONS SYSTEMS ENGINEERING
- **BSc in Geomatics**  
SCHOOL OF LAND SURVEYING, GEODESY AND MAPPING ENGINEERING
- **BSc in Geospatial Information Technologies Engineering**  
SCHOOL OF LAND SURVEYING, GEODESY AND MAPPING ENGINEERING
- **BSc in Information Society Technologies**  
SCHOOL OF COMPUTER SYSTEMS ENGINEERING
- **BSc in Information Systems**  
SCHOOL OF COMPUTER SYSTEMS ENGINEERING
- **BSc in Mathematics and Computing**  
SCHOOL OF COMPUTER ENGINEERING
- **BSc in Sound and Image Engineering**  
SCHOOL OF TELECOMMUNICATIONS SYSTEMS ENGINEERING
- **BSc in Telecommunications Systems Engineering**  
SCHOOL OF TELECOMMUNICATIONS SYSTEMS ENGINEERING
- **BSc in Telematics Engineering**  
SCHOOL OF TELECOMMUNICATIONS SYSTEMS ENGINEERING
- **Joint BSc in Computer Engineering and Business Administration and Management**  
SCHOOL OF COMPUTER ENGINEERING

- **Joint BSc in Geomatics Engineering and Geospatial Information Technologies Engineering (\*)**  
SCHOOL OF LAND SURVEYING, GEODESY AND MAPPING ENGINEERING
- **Joint BSc in Communications Electronics Engineering and Telematics Engineering**  
SCHOOL OF TELECOMMUNICATIONS SYSTEMS ENGINEERING

## ARCHITECTURAL AND CIVIL ENGINEERING TECHNOLOGIES

- **BEng in Civil Engineering**  
SCHOOL OF CIVIL ENGINEERING (MONCLOA CAMPUS)
- **BSc in Building Science (+ MSc in Technological Innovation in Building / Building Management Fast-Track Options)**  
SCHOOL OF BUILDING TECHNOLOGY
- **BSc in Foundations of Architecture (+ MSc in Architecture Fast-Track Option)**  
SCHOOL OF ARCHITECTURE
- **Joint BSc in Building and Business Management and Administration**  
SCHOOL OF BUILDING TECHNOLOGY
- **Joint BSc in Civil Engineering and Business Management and Administration**  
SCHOOL OF CIVIL ENGINEERING (MONCLOA CAMPUS)

## SPORTS

- **BSc in Sport Sciences**  
FACULTY OF PHYSICAL ACTIVITY AND SPORT SCIENCES (INEF)

## FASHION AND DESIGN

- **BA in Fashion Design**  
MADRID COLLEGE OF FASHION DESIGN
- **Joint BSc in Fashion Design (UPM) and Commerce (UCM)**  
MADRID COLLEGE OF FASHION DESIGN (UPM) - FACULTY OF TRADE AND TOURISM (UCM)

# POSTGRADUATE STUDIES MASTER'S DEGREE PROGRAMME CATALOGUE BY FIELDS

## AEROSPACE ENGINEERING

- **MSc in Aeronautical Engineering**  
SCHOOL OF AEROSPACE ENGINEERING
- **MSc in Air Transport Systems**  
SCHOOL OF AEROSPACE ENGINEERING
- **MSc in Space Systems**  
SCHOOL OF AEROSPACE ENGINEERING

## AGRICULTURAL, FOREST AND ENVIRONMENTAL ENGINEERING

- **Joint MSc in Agronomic Engineering and Agricultural Economics**  
SCHOOL OF AGRICULTURAL, FOOD AND BIOSYSTEMS ENGINEERING
- **MSc in Agricultural Engineering**  
SCHOOL OF AGRICULTURAL, FOOD AND BIOSYSTEMS ENGINEERING
- **MSc in Agro-Environmental Technology for a Sustainable Agriculture**  
SCHOOL OF AGRICULTURAL, FOOD AND BIOSYSTEMS ENGINEERING
- **MSc in Animal Production and Health**  
SCHOOL OF AGRICULTURAL, FOOD AND BIOSYSTEMS ENGINEERING
- **MSc in Economics Applied to Agriculture, Food and Natural Resources**  
SCHOOL OF AGRICULTURAL, FOOD AND BIOSYSTEMS ENGINEERING
- **MSc in Ecosystem Restoration**  
SCHOOL OF FOREST ENGINEERING AND NATURAL RESOURCES
- **MSc in Forest Engineering**  
SCHOOL OF FOREST ENGINEERING AND NATURAL RESOURCES
- **MSc in Forest Firefighting Technology**  
SCHOOL OF FOREST ENGINEERING AND NATURAL RESOURCES
- **MSc in Landscaping and Gardening**  
SCHOOL OF AGRICULTURAL, FOOD AND BIOSYSTEMS ENGINEERING
- **MSc in Uses and Management of Water Resources in the Natural Environment**  
SCHOOL OF FOREST ENGINEERING AND NATURAL RESOURCES
- **MSc in Precision Agriculture**  
SCHOOL OF AGRICULTURAL, FOOD AND BIOSYSTEMS ENGINEERING
- **Joint MSc Degree in Agricultural Engineering and Precision Agriculture**  
SCHOOL OF AGRICULTURAL, FOOD AND BIOSYSTEMS ENGINEERING

## ARCHITECTURE AND BUILDING TECHNOLOGY

- **Joint MSc in Technological Innovation in Building and Building Refurbishing and Restoration Works**  
SCHOOL OF BUILDING TECHNOLOGY
- **Master of Architecture**  
SCHOOL OF ARCHITECTURE
- **MSc in Advanced Architectural Projects**  
SCHOOL OF ARCHITECTURE
- **MSc in Architectural Communication**  
SCHOOL OF ARCHITECTURE
- **MSc in Architectural Heritage Conservation and Restoration**  
SCHOOL OF ARCHITECTURE
- **MSc in Building Management**  
SCHOOL OF BUILDING TECHNOLOGY
- **MSc in Building Structures**  
SCHOOL OF ARCHITECTURE
- **MSc in Construction and Architectural Technology**  
SCHOOL OF ARCHITECTURE
- **MSc in Building Refurbishment and Restoration Works**  
SCHOOL OF ARCHITECTURE
- **MSc in Cultural Heritage in the 21th century**  
SCHOOL OF ARCHITECTURE
- **MSc in Industrialized Construction and Architectural Prototyping**  
SCHOOL OF ARCHITECTURE
- **MSc in Urban and Spatial Planning**  
SCHOOL OF ARCHITECTURE
- **MSc in Technological Innovation in Building**  
SCHOOL OF BUILDING TECHNOLOGY
- **Joint MSc in Building Management and Building Refurbishing and Restoration Works**  
SCHOOL OF BUILDING TECHNOLOGY

- **Joint MSc in Building Management and Technological Innovation in Building**  
SCHOOL OF BUILDING TECHNOLOGY

## BIOTECH

- **MSc in Biotechnology and Plant Bioengineering**  
SCHOOL OF AGRICULTURAL, FOOD AND BIOSYSTEMS ENGINEERING
- **MSc in Biomedical Engineering**<sup>(\*)</sup>  
SCHOOL OF TELECOMMUNICATIONS ENGINEERING
- **MSc in Computational Biology**<sup>(\*)</sup>  
SCHOOL OF AGRICULTURAL, FOOD AND BIOSYSTEMS ENGINEERING
- **MSc in Food Engineering Applied to Health**  
SCHOOL OF AGRICULTURAL, FOOD AND BIOSYSTEMS ENGINEERING

## CIVIL, ENERGY, SUSTAINABILITY AND ENVIRONMENTAL ENGINEERING

- **Joint MSc in Civil Engineering and Civil Engineering Systems**  
SCHOOL OF CIVIL ENGINEERING (MONCLOA CAMPUS)
- **MSc in Civil Engineering**  
SCHOOL OF CIVIL ENGINEERING (MONCLOA CAMPUS)
- **MSc in Civil Engineering Systems**  
SCHOOL OF CIVIL ENGINEERING (MONCLOA CAMPUS)
- **MSc in Energy Efficiency in Buildings, Industry and Transport**  
SCHOOL OF MINING AND ENERGY ENGINEERING
- **MSc in Environmental Engineering**  
SCHOOL OF INDUSTRIAL ENGINEERING
- **MSc in Infrastructure Planning and Management**  
SCHOOL OF CIVIL ENGINEERING (CITY CENTRE CAMPUS)
- **MSc in Seismic Engineering: Soil and Structural Dynamics**  
SCHOOL OF INDUSTRIAL ENGINEERING
- **MSc in Soil and Groundwater Contamination**<sup>(\*)</sup>  
SCHOOL OF MINING AND ENERGY ENGINEERING
- **MSc in Engineering for Structures, Foundations and Materials**  
SCHOOL OF CIVIL ENGINEERING (MONCLOA CAMPUS)

## ENERGY, BUILDING CONSTRUCTION, CIVIL ENGINEERING, SUSTAINABILITY AND ENVIRONMENT

- **MSc in Circular Economy**  
SCHOOL OF FOREST ENGINEERING AND NATURAL RESOURCES
- **MSc in Energy Engineering**  
SCHOOL OF INDUSTRIAL ENGINEERING

## INDUSTRIAL ENGINEERING

- **Joint MSc in Industrial Engineering and Automation and Robotics**  
SCHOOL OF INDUSTRIAL ENGINEERING
- **Joint MSc in Industrial Engineering and Industrial Electronics**  
SCHOOL OF INDUSTRIAL ENGINEERING
- **Joint MSc in Industrial Engineering and Nuclear Science and Technology**  
SCHOOL OF INDUSTRIAL ENGINEERING
- **Joint MSc in Industrial Engineering and Seismic Engineering**  
SCHOOL OF INDUSTRIAL ENGINEERING
- **MSc in Automation and Robotics**  
SCHOOL OF INDUSTRIAL ENGINEERING
- **MSc in Chemical Engineering**  
SCHOOL OF INDUSTRIAL ENGINEERING
- **MSc in Electrical Engineering**  
SCHOOL OF INDUSTRIAL ENGINEERING
- **MSc in Electromechanical Engineering**  
SCHOOL OF INDUSTRIAL ENGINEERING AND DESIGN
- **MSc in Industrial Design Engineering**  
SCHOOL OF INDUSTRIAL ENGINEERING AND DESIGN

- **MSc in Industrial Electronics**<sup>(\*)</sup>  
SCHOOL OF INDUSTRIAL ENGINEERING
- **MSc in Industrial Engineering**  
SCHOOL OF INDUSTRIAL ENGINEERING
- **MSc in Mechanical Engineering**  
SCHOOL OF INDUSTRIAL ENGINEERING
- **MSc in Nuclear Science and Technology**  
SCHOOL OF INDUSTRIAL ENGINEERING
- **MSc in Production Engineering**  
SCHOOL OF INDUSTRIAL ENGINEERING AND DESIGN

## INFORMATION AND COMMUNICATIONS TECHNOLOGIES

- **MSc in Machine Learning and Big Data**  
SCHOOL OF TELECOMMUNICATIONS ENGINEERING
- **Joint MSc in Telecommunication Engineering and Electronic Systems Engineering**<sup>(\*)</sup>  
SCHOOL OF TELECOMMUNICATIONS ENGINEERING
- **Joint MSc in Telecommunication Engineering and Signal Theory and Communications**<sup>(\*)</sup>  
SCHOOL OF TELECOMMUNICATIONS ENGINEERING
- **Joint MSc in Master in Telecommunication Engineering and Telematics Services and Network Engineering**  
SCHOOL OF TELECOMMUNICATIONS ENGINEERING
- **Master's Programme in Data Science**<sup>(\*)</sup>  
SCHOOL OF COMPUTER ENGINEERING
- **MSc in Artificial Intelligence**<sup>(\*)</sup>  
SCHOOL OF COMPUTER ENGINEERING
- **MSc in Cybersecurity**  
SCHOOL OF TELECOMMUNICATIONS ENGINEERING
- **MSc in Digital Innovation**<sup>(\*)</sup>  
SCHOOL OF COMPUTER ENGINEERING
- **MSc in Digital Innovation / Health and Medical Data Analytics**<sup>(\*)</sup>  
SCHOOL OF COMPUTER ENGINEERING
- **MSc in Distributed and Embedded Systems Software**  
SCHOOL OF COMPUTER SYSTEMS ENGINEERING
- **MSc in Electronic Systems Engineering**  
SCHOOL OF TELECOMMUNICATIONS ENGINEERING
- **MSc in Formal Methods in Computer Science**<sup>(\*)</sup>  
SCHOOL OF COMPUTER ENGINEERING
- **MSc in Informatics Engineering**  
SCHOOL OF COMPUTER ENGINEERING
- **MSc in Internet of Things (IoT)**<sup>(\*)</sup>  
SCHOOL OF TELECOMMUNICATIONS SYSTEMS ENGINEERING
- **MSc in Photovoltaic Solar Energy**<sup>(\*)</sup>  
SCHOOL OF TELECOMMUNICATIONS ENGINEERING
- **MSc in Signal Theory and Communications**<sup>(\*)</sup>  
SCHOOL OF TELECOMMUNICATIONS ENGINEERING
- **MSc in Software and Systems**<sup>(\*)</sup>  
SCHOOL OF COMPUTER ENGINEERING
- **MSc in Software Engineering**  
SCHOOL OF COMPUTER ENGINEERING
- **MSc in Statistical and Computational Information Processing**  
SCHOOL OF TELECOMMUNICATIONS ENGINEERING
- **MSc in Telecommunication Engineering**<sup>(\*)</sup>  
SCHOOL OF TELECOMMUNICATIONS ENGINEERING
- **MSc in Telematics Services and Network Engineering**  
SCHOOL OF TELECOMMUNICATIONS ENGINEERING
- **MSc in Web Engineering**  
SCHOOL OF COMPUTER SYSTEMS ENGINEERING
- **MSc in Wireless Communications**<sup>(\*)</sup>  
SCHOOL OF TELECOMMUNICATIONS SYSTEMS ENGINEERING

## MANAGEMENT AND ORGANIZATION

- **MSc in Disaster Management**  
SCHOOL OF MINING AND ENERGY ENGINEERING
- **MSc in Ecological and Sustainable Tourism Management**  
SCHOOL OF FORESTRY ENGINEERING AND NATURAL RESOURCES
- **MSc in Economics and Innovation Management**  
SCHOOL OF INDUSTRIAL ENGINEERING
- **MSc in Organizational Engineering**

- **MSc in Project Planning for Rural Development and Sustainable Management**  
SCHOOL OF AGRICULTURAL, FOOD AND BIOSYSTEMS ENGINEERING
- **MSc in Strategies and Technologies for Development: Cooperation in a Changing World**  
SCHOOL OF AGRICULTURAL, FOOD AND BIOSYSTEMS ENGINEERING

## OTHER BRANCHES OF ENGINEERING AND RELATED PROFESSIONS

- **MSc in Acoustic Engineering**  
SCHOOL OF TELECOMMUNICATIONS SYSTEMS ENGINEERING
- **MSc in Applied Geomatics in Engineering and Architecture**  
SCHOOL OF LAND SURVEYING, GEODESY AND MAPPING ENGINEERING
- **MSc in Geological Engineering**  
SCHOOL OF MINING AND ENERGY ENGINEERING
- **MSc in Industrial Mathematics**  
SCHOOL OF AEROSPACE ENGINEERING
- **MSc in Materials Engineering**  
SCHOOL OF CIVIL ENGINEERING (MONCLOA CAMPUS)
- **MSc in Mining Engineering**  
SCHOOL OF MINING AND ENERGY ENGINEERING
- **MSc in Naval and Oceanic Engineering**  
SCHOOL OF NAVAL ARCHITECTURE AND MARINE ENGINEERING
- **MSc in Seismic Risk Analysis through Geospatial Technologies**  
SCHOOL OF LAND SURVEYING, GEODESY AND MAPPING ENGINEERING
- **MSc in Sustainable Mining**  
SCHOOL OF MINING AND ENERGY ENGINEERING

## SPORT SCIENCES

- **MSc in Physical Activity and Sports Sciences**  
FACULTY OF PHYSICAL ACTIVITY AND SPORT SCIENCES (INEF)

## TECHNOLOGY AND INNOVATION IN FASHION DESIGN

- **MSc in Engineering and Fashion Design**  
MADRID COLLEGE OF FASHION DESIGN

## OTHERS

- **MSc in Secondary School Teacher Training (Graphical Expression Major)**  
SCHOOL OF TECHNICAL HIGHER EDUCATION
- **MSc in Secondary School Teacher Training (Mathematics Major)**  
SCHOOL OF TECHNICAL HIGHER EDUCATION
- **MSc in Secondary School Teacher Training (Physics and Chemistry Major)**  
SCHOOL OF TECHNICAL HIGHER EDUCATION
- **MSc in Secondary School Teacher Training (Physical Education Major)**  
FACULTY OF PHYSICAL ACTIVITY AND SPORT SCIENCES (INEF)
- **MSc in Secondary School Teacher Training (Technology Major)**  
SCHOOL OF TECHNICAL HIGHER EDUCATION

(\*) Programme taught in English

# PhD Programmes



POLITÉCNICA

UNIVERSIDAD  
POLITÉCNICA  
DE MADRID

Foto por: ALEJANDRO ASTUDILLO

## MANUFACTURING & INDUSTRY

- PhD in Automatic Control and Robotics
- PhD in Economics and Innovation Management
- PhD in Sustainable, Nuclear and Renewable Energy
- PhD in Aerospace Engineering
- PhD in Environmental, Chemical and Materials Engineering
- PhD in Engineering Management
- PhD in Production Engineering and Industrial Design
- PhD in Electrical and Electronic Engineering
- PhD in Mechanical Engineering
- PhD in Environmental Research, Modelling and Risk Assessment
- Interuniversity Program of Fluid Mechanics

## ICT

- PhD in Science and Computer Technologies for Smart Cities
- PhD in Photovoltaic Solar Energy
- PhD in Biomedical Engineering
- PhD in Electronic Systems Engineering
- PhD in Telematic System Engineering
- PhD in Systems and Services Engineering for the Information Society
- PhD in Mathematical Engineering, Statistics and Operations Research

- PhD in Artificial Intelligence
- PhD in Software, Systems and Computing
- PhD in Communication Technologies and Systems

## AGRICULTURE, FORESTRY AND ENVIRONMENT

- PhD in Agro-Engineering
- PhD in Biotechnology and Genetic Resources of Plants and Associated Microorganisms
- PhD in Engineering and Management of the Natural Environment
- PhD in Advanced Forest Research
- PhD in Project Planning for Rural Development and Sustainable Management
- PhD in Complex Systems
- PhD in Agro-environmental Technology for Sustainable Agriculture

## CIVIL ENGINEERING

- PhD in Engineering of Structures, Foundations and Materials
- PhD in Geomatic Engineering
- PhD in Naval Architecture, Marine and Ocean Engineering
- PhD in Technological Innovation in Building
- PhD in Civil Engineering Systems

## ARCHITECTURE

- PhD in Architecture and Urbanism
- PhD in Building and Architectural Technology
- PhD in Building Structures
- PhD in Architectural Heritage
- PhD in Advanced Architectural Projects
- PhD in Sustainability and Urban Regeneration

## ARTS & SOCIAL SCIENCES

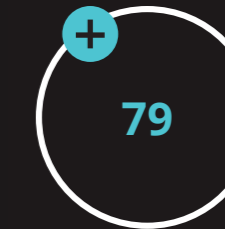
- PhD in Architecture, Design, Fashion & Society
- PhD in Sciences of Physical Activities and Sports
- PhD in Architectural Communication
- PhD in Music and its Science and Technology

# UPM, a window on the world



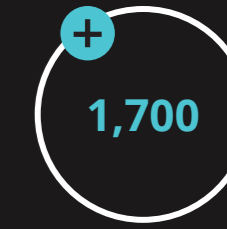
## COOPERATIVE AGREEMENTS

Around 1,600 academic and scientific agreements with international universities.



## DOUBLE DEGREE AGREEMENTS

79 double degree agreements with European, Latin American, US and Chinese institutions.



## STUDENTS STUDYING ABROAD

More than 1,700 UPM students participate in study abroad programmes every year, two-thirds under the Erasmus+ umbrella.

The UPM has two permanent international representations: **UPM Representation to North America (based at Harvard University)** and **UPM Representation to Asia and Oceania (based at Tongji University)**.

## UPM INTERNATIONAL

The UPM attaches huge importance to international education as a means of learning about different cultures, relating to other societies and, ultimately, rounding out student training and improving their integration into a multicultural environment.

**UPM leads the Magalhaes academic exchange network, as well as cooperation between Europe, Latin America and the Caribbean.**

## EELISA European Universities Alliance

The Universidad Politécnica de Madrid leads the EELISA alliance. EELISA brings together a higher education community of over 180,000 students, 16,000 academic, and 11,000 administrative and service staff that will benefit from the initiatives developed across this new European network. EELISA also aspires to transform higher education and play a key role in the search for solutions to the social and environmental challenges facing European society today.

The members of the EELISA alliance, coordinated by the UPM, are the technical universities of Bucharest, Budapest, Istanbul and the Friedrich-Alexander-Universität Erlangen-Nürnberg, three French grandes écoles specializing in science and energy linked to the Université Paris Sciences et Lettres (École de Ponts ParisTech, Mines ParisTech, Chimie ParisTech), and the renowned Pisa-based Scuola Normale Superiore and Scuola Superiore di Studi Universitari e di Perfezionamento Sant'Anna.

EELISA  
European University



# Social commitment

One UPM action line is to promote a barrier-free university guaranteeing equal opportunities and non-discrimination of people with disabilities. Another is to encourage gender equality policies within the university.

The UPM also has a strong and deep-rooted commitment to solidarity and development problems. Students and scholars put their knowledge, inventiveness and creativity to the service of good causes.



18 COOPERATION FOR DEVELOPMENT GROUPS

DISABILITY SUPPORT UNIT

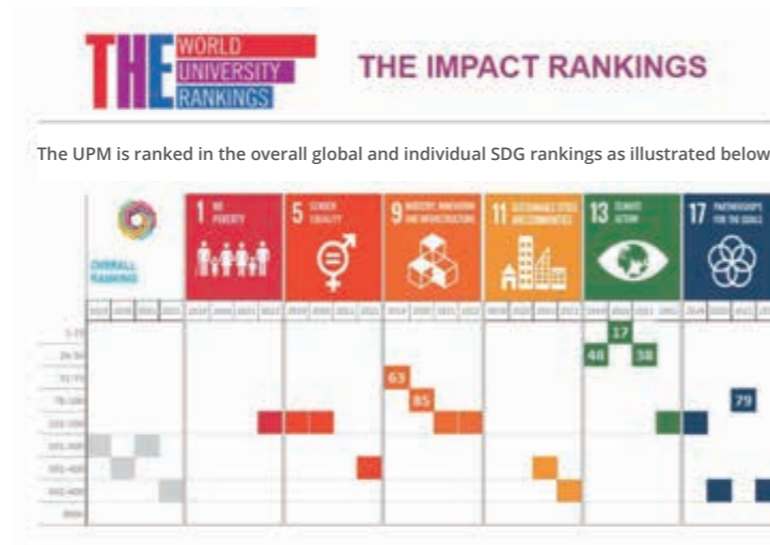
GENDER EQUALITY UNIT

Photo by ANDREA AMAYA BELTRAN

# UPM and SDGs

The Universidad Politécnica de Madrid places sustainable development goals (SDGs) at the heart of its key fields of action. Within research, it aligns projects with and trains researchers in SDGs through the promotion of multi-stakeholder alliances. Within teaching, it includes SDGs in educational programmes. Currently, the contents of 33% of the courses taught at UPM focus on SDG development. UPM set up the MSc in Development Strategies and Technologies and launched specialized training courses on sustainable cities. Within technology transfer, it promotes SDGs through the Centre of Technology Innovation for Development (itdUPM), Madrid City Council's Circular Economy Innovation Centre or development and sustainability university-industry partnerships.

Since 2018, the UPM holds UPM Technology and Innovation for Sustainable Development Goals Seminars aimed at increasing the visibility of research on key issues that are part of the international sustainability agenda. Over 700 researchers and 140 research groups have participated in these seminars.



The UPM is ranked in the overall global and individual SDG rankings as illustrated below:

The UPM is one of the first 200 universities in the world to achieve SDG1, SDG9 and SDG13.

Additionally, a number of UPM schools have SDG hubs. The SDG hubs are responsible for organizing actions aimed at achieving SDGs, promoting collaboration between students, and teaching and administrative staff and generating synergies that transform their school.

# Campus life

Life at university is much more than just studying. The UPM offers extra-curricular activities promoting culture, sports, teamwork and solidarity.

- 130 student associations
- 16 sports clubs
- UPM Symphony Orchestra and Band

## Culture

The UPM sponsors a remarkable number of both institutional and student-led cultural activities. Students organize the annual *tuna*<sup>1</sup> contest and theatre festivals.

UPM cultural events revolve around music, including its annual concert cycle held at the National Auditorium of Music, Madrid's main concert hall, together with performances by the UPM's Choir (founded over 25 years ago), and the recently established UPM Symphony Orchestra and Band.

1.- Group of university students in traditional university dress playing traditional instruments and singing serenades.

## Sports

The UPM fosters sports. It has sports facilities at several schools, as well as a on the South and Montegancedo Campuses, also adapted for people with reduced mobility. Its school-based sports clubs encourage their students to partake of physical activity. Every year a large student contingent from the Universidad Politécnica de Madrid participates in the Spanish Higher Education Championships, and the UPM is high up in the medal table.

## Associations

Student associations are the most important driving force behind culture, leisure and sports at UPM. There are over 160 associations, whose members cultivate personal relationships, develop their creativity and take pleasure in the wide-ranging activities that they organize.



## L CENTRO DE LENGUAS UPM

The UPM Language Centre offers a flexible variety of courses and language accreditation tests adapted to the demands of the higher education community. Its main objectives are to: i) train UPM students and staff in foreign languages in order to improve their

communication skills in the academic and professional field and ii) train international students and visiting faculty from foreign institutions in Spanish language and culture in order to help them integrate both personally and academically.

Through the Language Centre, the UPM once again demonstrates its international spirit and its active participation in academic mobility projects inside and outside the European Union.





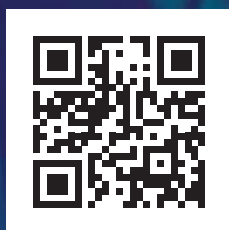
POLITÉCNICA

UNIVERSIDAD  
POLITÉCNICA  
DE MADRID

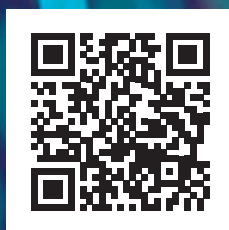
UNIVERSIDAD  
POLITÉCNICA  
DE MADRID

Rectorado  
C/Ramiro de Maeztu, 7  
28040, Madrid

© UPM Communications Office, 2024



[www.upm.es](http://www.upm.es)



Download this  
brochure here

