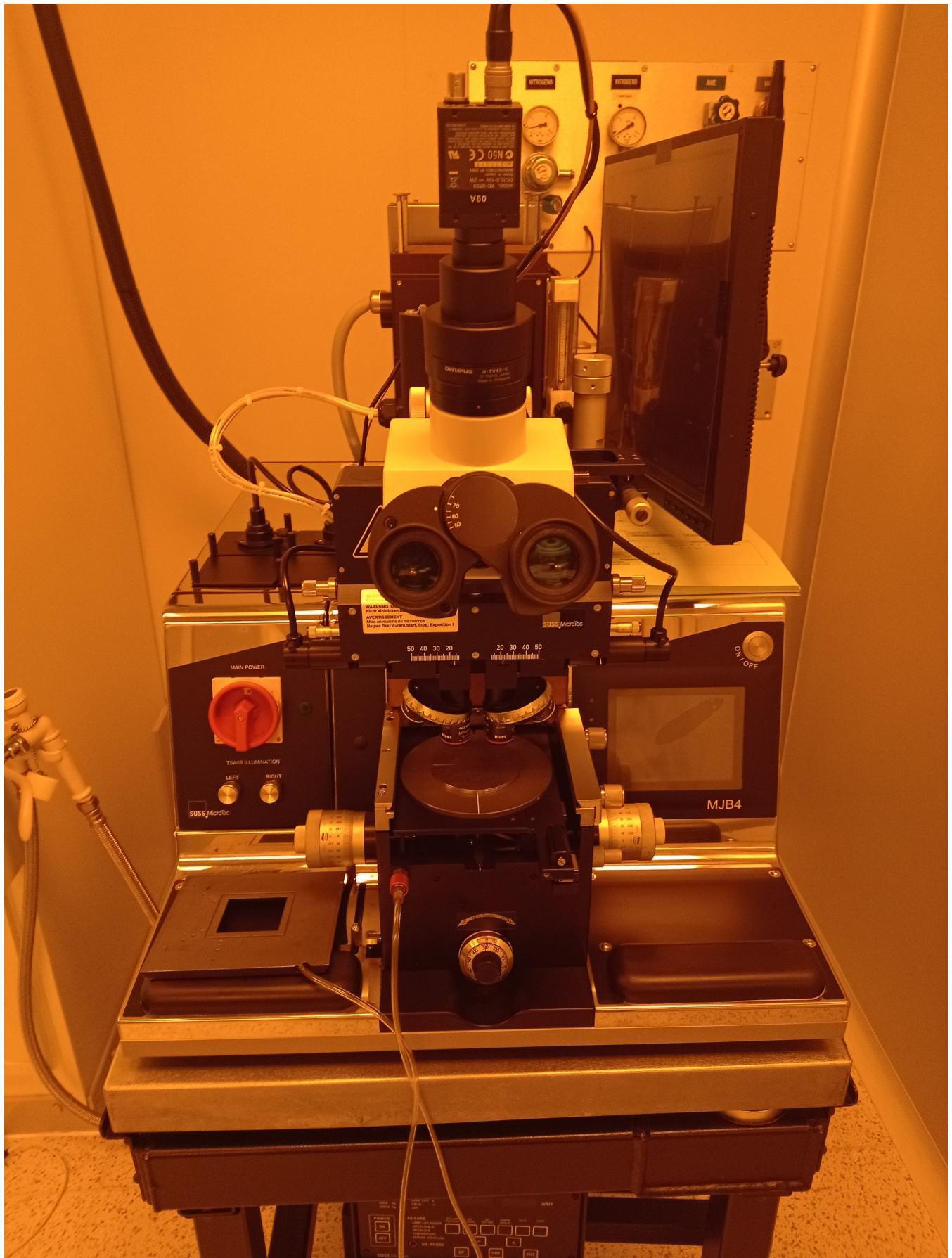
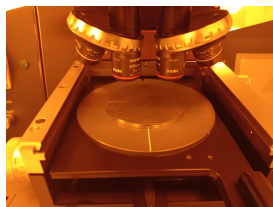


High resolution optical lithography

ISOM Science and Technology Service within the framework of the field of processing techniques research





Contact information

Address: Universidad Politécnica de Madrid E. T. S. I. Telecomunicación (U. P. M.) Edificio López Araújo, Avenida Complutense, 30 28040 Madrid, España

Phone number: 910672593

Website: isom.upm.es

Email: manuel.abuin@upm.es

Technological Offers type

Technological scientific services

Research and innovation areas

- Digital Technologies, Artificial Intelligence, Cybersecurity, 5G, Robotics
- Industry, Materials and Circular Economy
- Science For Engineering and Architecture

ODS



Available from: 2015

Where?

ISOM Semiconductor Devices Group University Optoelectronics and Microtechnology Systems Institute

Keywords: | [devices](#) | [lithography](#) | [optics](#) | [optoelectronics](#) | [resins](#)

High resolution lithography

The equipment lithographs all kinds of designs on positive and negative resins, on up to 4 inch wafers. The designs carried out can be up to 500 nm due to the 240 nm ultraviolet lamp.

Description of the services offered

- Developing lithographs with conventional masks on flat wafers or substrates. Designing a specific mask for an application. Positive and negative lithography. Device contact using lithography
 - Training in the use of lithographic techniques
-

Needs requested and applications

This kind of service is used to make devices from 0.5 micron to a few millimetres. The applications are highly varied depending on the device to be made

Sector or area of application

Electronics, optics, optoelectronics, magnetic devices

Differential skills

The lithographic equipment is in a White Room which is certified as ICTS - Singular science and technology infrastructure. This means that it has extremely high air quality with hardly any contaminant particles, due to the HEPA filters. The White Room technicians have extensive experience in mask design and lithography on various materials, as well as device interconnection.

Previous references for provision of services

Where it is

ISOM. HTSE for Telecommunications

Request for service

[Protocolo de Acceso](#)
